



આલોભા શીલ

બહારી...

બહારી

નિયંત્રણ

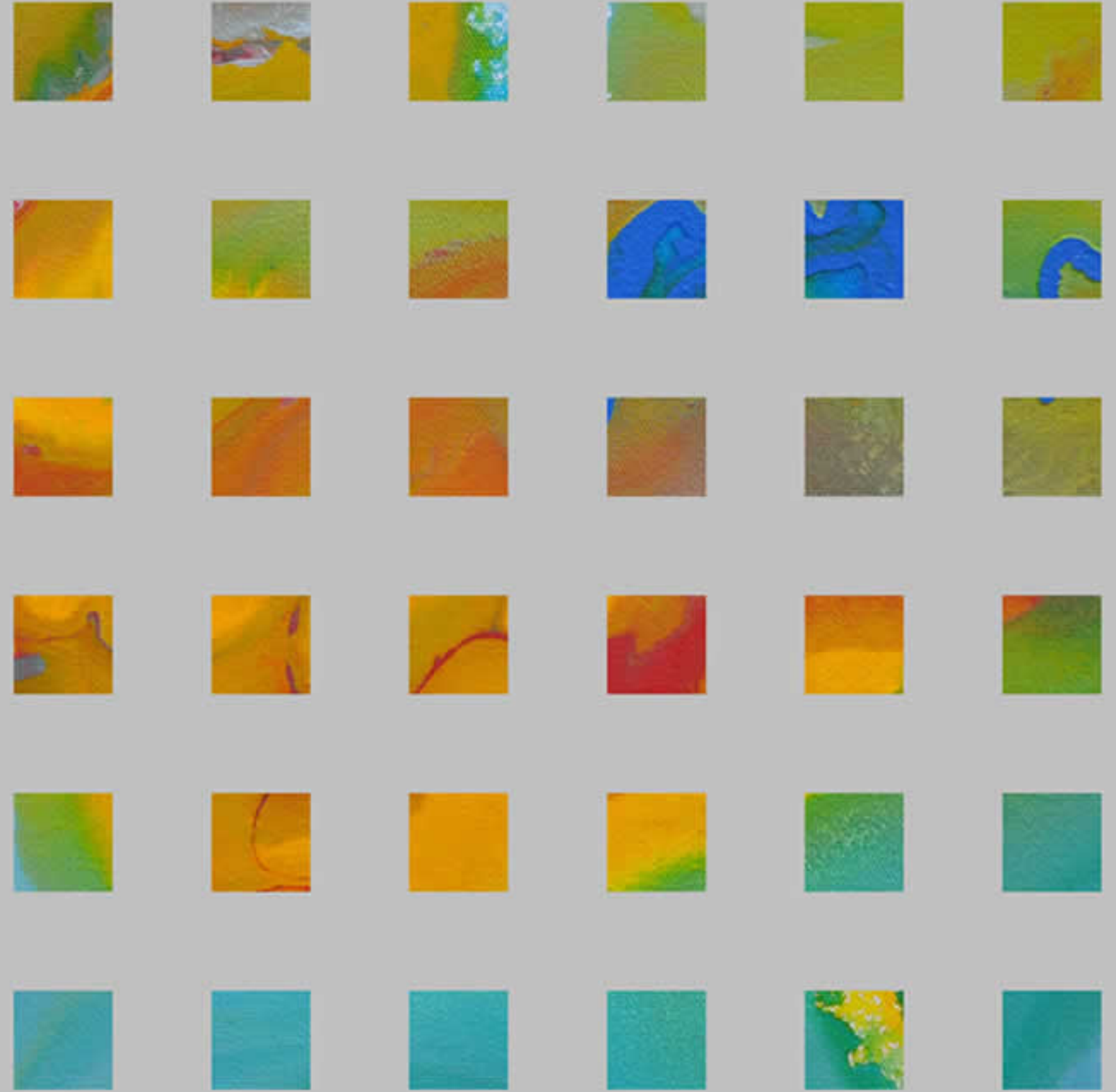
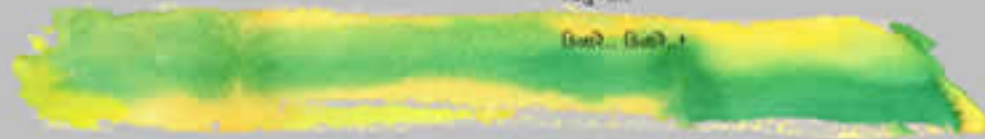
શબ્દ

શીલ...

સૈંદ બીલે

જગુબોને

કાલે... કાલે... !



...emerging community with luxury





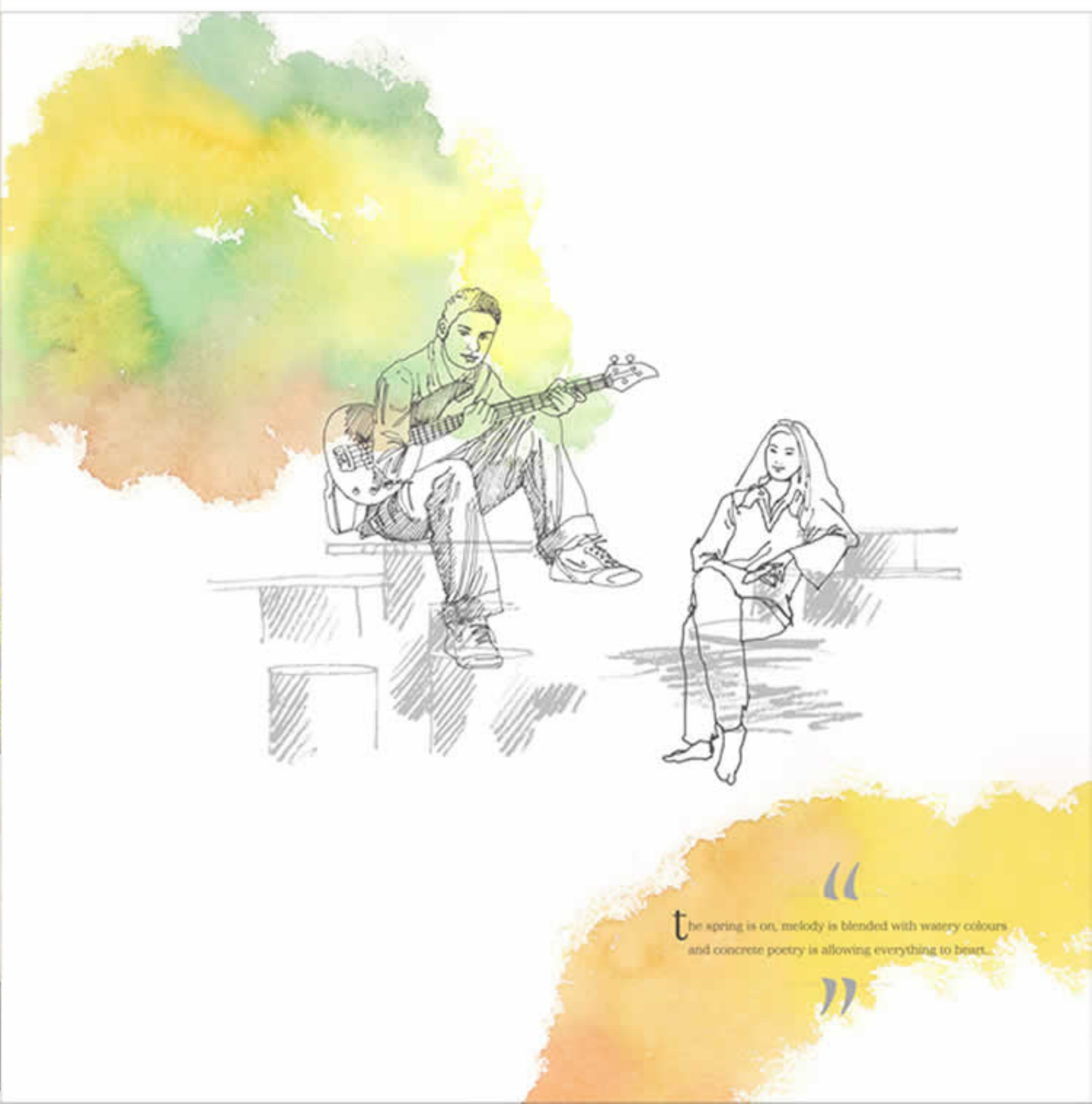
“  
Splendid life situated at river Tapi, is just a chance to be there when the nature calls.  
Four Seasons is the name where exclusivity itself stands and blended with upcoming community  
”





...n ot just being different, in spirit of making a difference we have crafted a  
architectural manifesto to be with nature







Poetic  
Subliminal.  
Vogue.  
Sculpturous  
An address of exclusivity.  
A destination of Divine Nature

**FOUR SEASONS**

for those who promise the life class apart,  
a pride of place awaits here







GROUND LAYOUT PLAN



SKYWALK HEIGHT



TERRACE		13th Flr.
1201	1202	12th Flr.
1101	1102	11th Flr.
1001	1002	10th Flr.
901	902	9th Flr.
801	802	8th Flr.
701	702	7th Flr.
601	602	6th Flr.
501	502	5th Flr.
401	402	4th Flr.
301	302	3rd Flr.
201	202	2nd Flr.
PARKING	PARKING	1st Flr.
PARKING	PARKING	Ground Flr.

SKY LINE



FIRST FLOOR PARKING LAYOUT



GROUND FLOOR PARKING LAYOUT

202 TYPICAL FLOOR PLAN 201



ENLARGED UNIT PLAN



SKYWALK HEIGHT



TERRACE		13th Flr.
1201	1202	12th Flr.
1101	1102	11th Flr.
1001	1002	10th Flr.
901	902	9th Flr.
801	802	8th Flr.
701	702	7th Flr.
601	602	6th Flr.
501	502	5th Flr.
401	402	4th Flr.
301	302	3rd Flr.
201	202	2nd Flr.
PARKING	PARKING	1st Flr.
PARKING	PARKING	Ground Flr.

SKY LINE



FIRST FLOOR PARKING LAYOUT



GROUND FLOOR PARKING LAYOUT



ENLARGED UNIT PLAN



SKYWALK HEIGHT

TERRACE		13th Flr.
1201	1202	12th Flr.
1101	1102	11th Flr.
1001	1002	10th Flr.
901	902	9th Flr.
801	802	8th Flr.
701	702	7th Flr.
601	602	6th Flr.
501	502	5th Flr.
401	402	4th Flr.
301	302	3rd Flr.
201	202	2nd Flr.
PARKING	PARKING	1st Flr.
PARKING	PARKING	Ground Flr.

SKY LINE



FIRST FLOOR PARKING LAYOUT



GROUND FLOOR PARKING LAYOUT



ENLARGED UNIT PLAN





# Specifications

## Structure

R.C.C earthquake resistance frame structure with siporex block masonry

## Door

Italian marble frame in all internal and External doors with Wooden shutter with wooden planks with all S.S. finish fittings.

## Internal wall finish

Internal double coat mala finish plaster with gypsum finish with Velven (ICI) paint of two coat.

## Windows

Anodized coated Aluminum section window make out of Dorsal with granite sills & jamba (All windows will be double Glass Windows)

## External wall finish

Single coat sand face plaster finished and above that Stone/A.C.P./Shera cladding on external area.

## Water Supply

1,00,000 ltr. underground water tank & 30,000 ltr. over head water tank for each tower with pneumatic pressure pump system.

Description	Living/Dining	Kitchen	Bed Rooms	Toilets
<b>Flooring</b>	Italian Marble flooring in Living and River wash granite finish in Deck area.	Peel Based Granite Kitchen 30 platform with composite White Marble Dado	Wooden Flooring (Wall nut/Vangr/finish) & wall paper in any one wall	Exclusive Composite Marble on wall & Granite flooring in Toilet with 6 Jet nozzles & Head Shower spout.
<b>Cladding</b>	Mat finish stone on any one wall	crystal twin bowl sink & chimney of hatch	Italian Marble (Bracia Arena/ Esiliya) flooring & wall paper on any one wall	Italian Marble on wall & Granite (mt x mt) in Toilet with 6 Jet Nozzles with head hower and spout
<b>Shower</b>		Kitchen Trolley will be Italian designed based ready made Kitchen	4x4 Granite white tiles with wooden flooring inside	12'x24" mat finish tile of RAK brand with shower panel
<b>Accessories &amp; Fittings</b>			Bed room with composite White Marble	mt x mt RAK Granite flooring with Shower panel
<b>Electrification</b>	In concealed conduits with Finolex copper wire with modular switches of M.K./Crestree/North west or eq. make in all rooms. TV Tele, Internet (WIFI) and provided with backup Generator facilities with essential power supply.			
	C.C. TV, Tele, Intercom, TV pt.	Freeze, Mixture, Grinder, Aquaguard pt. in kitchen, Washing machine, Dish washer pt. in wash, flour mill pt. in store	TV Tele, Intercom, Internet (wt fi) in bedroom, Hair Dryer pt. in dressing	Exhaust Fan pt., Tele pt. Gasser, Shaver pt.

## Air conditioning

Mitsubishi Electric/Daikin make VRF Air conditioning System

## Elevators

Two Kore 12 Passengers Elevators for each building out of which one will be a stretcher lift. Separate lift for Servant too.

## Security

All reception area and lobby and even lift will be operated through scratch Card. Video door phone and even reception video phone will be visible in room before coming to lobby level of any floor. Secondary alarm system will be provided at every level lobby for extra safety.

## Garbage Shaft

Garbage shaft in common passage area for wet & dry garbage disposal.

## Balcony Railing

Glass railing with support & Hand rail of S.S. finish

## Servent Quarter

Servent room with A. Toilet for each flat at same floor level & separate from flat having separate lift provision

## Lobby & Stair Case

Lobby finished with granite floor and Balias Granite Wall cladding. Stair case will be finished with Granite Tappa & riser.

## Window Grill

Fix designed Window grill in S.S. finish (Expense Bera by Flat Owner)

## Plumbing & Sanitary lines

Internal Concealed plumbing with Tata C class pipes & External with C.F.V.C. pipe lines, In Sanitary PVC pipe of Prince/Tioxide make and underground drainage with PVC lines & ready made Chamber of PVC. of Supreme make.

## Plumbing & Sanitary fittings

Kalbar or eq. make Plumbing fittings with different series & American Standard sanitary ware.

## Power Supply

Three phase meter supply for every individual flat owner with essential Generator support.

## Project Features

- Exclusive Balcony with Entrance foyer with entrance porch at 1st & 2nd level parking.
- Exclusive Library, Gymnasium, Steam, Sauna & cold bath at 1st level parking with indoor games Hoker facility.
- Exclusive Room given for Extra Guest accommodation at 1st level parking.
- Exclusive Reception and waiting with one office space for flat holder to attend office in unavailability situation.
- Exclusive car parking for each flat holders with allot parking bears @ 1st parking level and bears @ 2nd parking level
- Exclusive yoga center with wooden flooring with semi covered space.
- Landscaped courtyard will be given at 1st & 2nd parking level to Enhance Aesthetical Environment at both level.
- Fountain Setting with entrance Canopy to receive nest at entrance level.
- Landscaped Drive way with Status or Sculpture and Designer Lighting to make Lobby level a pleasant Environment.
- 3000 sq. yds lawn area with a 100 persons seating capacity pavilion with floor level water jet platform with a Dias to make party a extravaganza treat for Guest at river bank.
- 2500 sq. yds lawn area with Dias and seating pavilion to cater any sort of families on party on the bank of river.
- 60 persons seating pavilions with swimming pool on same edges to enhance a better life.
- All entrance foyers will have Extravaganza canopy with beautifully landscape front yard with whistling fountaining and seating flavor has been added with natural material to enhance Arrival and departure a welcoming Experience.
- A play area at the entrance given for kids below 5 years with Bamboo covered seating area for parents with all games.
- Road side with a landscaped parking and seating area on breeze side to fill the beauty of Trees passes from Balcony.



**ORGANIZER**

**Abhishek Group**

Abhishek House  
Jeevan Bharti School  
Nangpur, Surat.  
T: (0201) 246 0444, 246 3656  
eM: fourseasonsabhishek@ymail.in

**STRUCTURAL ENGINEER**

Jalil A. Sheikh  
B-601, President Plaza,  
Near R.T.O.,  
Ring Road, Surat.  
T: (0201) 247 2288, 247 2299  
eM: Jalilsheikh1@satyam.net.in

**VASTU CONSULTANT**

R. Gurudutt Shenoy  
T: (0) 98251 85088

**ELECTRICAL CONSULTANT**

APOORVA PARIKH  
Consultant - electrical  
103, Anjani Flats,  
Opp. Karnavati Club,  
S. G. Highway,  
Satellite, Ahmedabad - 15  
T: (079) 2692 4334  
eM: apoorvaparikh@gmail.com.

**PLUMBING CONSULTANT**

Shabbir bhai Malawwala  
403, Cassin, Hiranandani Estate,  
T: (022) 2530 8317, 6573 7964  
eM: smalawwala@yahoo.co.in

**LEGAL ADVISOR**

Hitesh Lalwala  
56-57, River Palace Apt.,  
Nangpur, Surat.  
T: (0201) 247 4401, 247 0322

**ARCHITECT**

Sanjay Joshi  
Antrik besant Appt.,  
Soni Dida, Surat.  
T: (0) 96798 61616, 96798 61617  
eM: sanjayjoshi@yahoo.com  
Contact Person (Vijay)

**ASSOCIATED ARCHITECT**

C.W. Kimo  
San Diego  
California  
America.



**PROJECT ASSOCIATES (by products)**

Elevators <b>KONE</b> or <b>Schindler</b>	Electrical Cables <b>Finolex</b>	Electrical Switchgear <b>ABB</b> <b>APV</b>	Kitchen Accessories <b>FRANKO</b> or <b>cotaC</b>	Steel <b>TATA</b> <b>VIZAG</b>
Paint (Interior) <b>ICI</b> (DULUX)	Paint (Exterior) <b>ICI</b> (MAX)	Air Conditioning <b>DAIKIN</b>	Anti termite <b>India</b> Pest Control	Wi-Fi Systems <b>BSNL</b>
Hardware <b>D-Line</b> Enox	Sanitary ware <b>American Standard</b>	Sanitary Fittings <b>THE GOLD LOCK</b> OR <b>KOHLER</b> <b>TOTO</b>	Wooden Flooring <b>FINSA</b>	Kitchen Trolley Italian Make
Italian Marble <b>CLASSIC</b> Marble	Granite <b>Natural</b> Indian	Max Finish Wall Tile <b>RAK</b> <b>TOTO</b>	Aviring (Paving) <b>Natural</b> Stone	Outside Sanitary Fittings <b>Prince</b> (PVC) C-PVC
Glass <b>SANT-GOBAIN</b> GLASS	Water Purifier <b>GROHE</b>	Security System <b>PORTUNA</b>	Music System <b>TANNON</b> ONKIO	Water Purifier <b>ZERO-B</b>

એક પરિ,  
ઉંઠે વાહલે,  
ભીની લયે  
ધેર વિચારે  
ઉં આકારે  
વરસાદ એની મોસમ,  
એનું વિશ લીલુંલમ  
ફુલો એના સમલાં  
'ને યાદો એની મોસમ  
નીરખે એ વન... ને કહે એ મન..  
વરસે કોઈ સજાવર  
વરસે કોઈ મનભર...